

Italian Designed. Australian at heart

DAN1001SB-BN

Square Brushed Nickel Mixer



Features

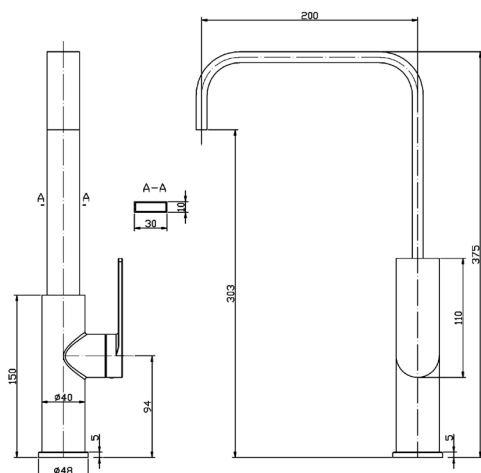
- Premium brass construction
- Square solid handle
- Clean smooth design
- Swivel outlet for easy access
- 25mm Cartridge
- 5.0 water rating
- 10 years warranty
- 5 years replacement products & parts
- 1 years labour

Product Dimensions

375mmH x 200mmW

Installation Information

A suitably qualified plumber is required for installation. It is suitable that this tap is installed directly through a solid bench top or a top mounted sink.



Please note:

Dimensions and specifications are a guide only refer to the instruction manual for full instructions. Every effort has been made to ensure this information is correct. However, due to product improvement Daniela Appliances reserves the right to make changes to products without prior notice.

IN HOUSE **2** YEARS WARRANTY